

# EAS ACCESSORIES



Hangzhou Ontime I.T. CO., LTD.



ul. Polna 10, 05-119 Legionowo  
Poland Tel. +48 784 143 308  
biuro@blumark.pl www.blumark.pl

# CONTENTS

---

<b>Company Introduction</b>	02
<b>EAS Product</b>	04
Alarm Secured series	06
Hard Tag series	11
Benefit Denial series	22
Optical Tag series	27
Bottle Tag series	29
Paper Label series	34
Safer series	38
Detacher series	42
Pin series	46
Lanyard series	50
Deactivator series	51
Hand Verifier series	53
People Counter series	54
<b>Quality Management</b>	55
<b>At your service</b>	56



HANGZHOU ONTIME I.T. CO., LTD, founded in 1994, integrating science, technology, industry and commerce, is a leading manufacturer in EAS industry. Based on the outstanding product quality and afterservice, we provide Antitheft Solution for retailers all over the world and built up the worldwide considerate service net in Europe, America, Asia and Middle East.

ONTIME offers full range of EAS products: detection System, deactivator, Hard Tags and Labels, etc, daily output reaches 1,000,000 tagging products. Meanwhile, we devoted ourselves to introducing advanced process, strict quality control system and excellent warehouse management to improve product performance and timely delivery.

We have achieved ISO9001, ISO14001, CE and other certifications such as ROHS, REACH, PSE, etc. In the meantime, over 70 design patent and utility patent certificates approved by domestic and international patent offices are used in our EAS solution for retailers all over the world.



## CERTIFICATE / PATENT



*we are the team  
we grow together!*





## Solution For EAS

### **What is EAS?**

Within the retail industry, the devices are generally known as security tags or Electronic Article Surveillance (EAS) tags. The technology favored for modern tags involves a set of gates that transmits pulses of a low-range radio frequency. Inside each security tag is a resonator, a device that picks up the transmitted signal and repeats it. The set of gates also contains a receiver that is programmed to recognize whether it is detecting the target signal during the time gaps between the pulses being broadcast by the gates. Sensing a signal during these intervals indicates the presence of a signal being resonated (rebroadcast) by a security tag in the detection zone. When this occurs, the gates sound an alarm; in some systems, the alarm sound is accompanied by a flashing light.

### **What EAS can do?**

- 1☐ Provide security and tracking for the entire merchandise chain
- 2☐ Enable new sale mode for openly displayed merchandises
- 3☐ Reduce labor cost and improve working efficiency





#### AS1057 Double Protection Adhesive Tag

**Frequency:** 8.2MHz / 58KHz  
**Unit Dimension:** 60Dia x 16mm  
**Plastic Color:** Gray, White or Customized  
**Lock:** Magnetic Locking  
**Packing Details:** 250pcs/ctn; 12.0kgs/ctn; 0.036cbm/ctn



#### AS1001 Double Protection Box Wrap-S

**Frequency:** 8.2MHz(\*) / 58KHz / 8.2MHz & 58KHz  
**Unit Dimension:** 45Dia x 45mm  
**Plastic Color:** Gray, White or Customized  
**Lock:** Magnetic Locking  
**Packing Details:** 250pcs/ctn; 12kgs/ctn; 0.033cbm/ctn



#### AS1002 Double Protection Box Wrap-M

**Frequency:** 8.2MHz(\*) / 58KHz / 8.2MHz & 58KHz  
**Unit Dimension:** 57Dia x 47mm  
**Plastic Color:** Gray, White or Customized  
**Lock:** Magnetic Locking  
**Packing Details:** 100pcs/ctn; 9kgs/ctn; 0.036cbm/ctn



#### AS1003 Double Protection Box Wrap-L

**Frequency:** 8.2MHz(\*) / 58KHz / 66KHz / 8.2MHz & 58KHz / EM / 8.2MHz & 66KHz  
**Unit Dimension:** 70Dia x 47mm  
**Plastic Color:** Gray, White or Customized  
**Lock:** Magnetic Locking  
**Packing Details:** 100pcs/ctn; 11.5kgs/ctn; 0.033cbm/ctn



#### AS1004 Triple Protection Box Wrap-M

**Frequency:** 8.2MHz / 58KHz  
**Unit Dimension:** 57Dia x 54mm  
**Plastic Color:** Gray, White or Customized  
**Lock:** Magnetic Locking  
**Packing Details:** 100pcs/ctn; 9kgs/ctn; 0.036cbm/ctn



#### AS1005 Double Protection Box Wrap-L

**Frequency:** 8.2MHz(\*) / 58KHz / 66KHz / 8.2MHz & 58KHz / EM / 8.2MHz & 66KHz  
**Unit Dimension:** 72Dia x 54mm  
**Plastic Color:** Gray, White or Customized  
**Lock:** Magnetic Locking  
**Packing Details:** 100pcs/ctn; 12.0kgs/ctn; 0.036cbm/ctn



#### AS1006 Triple Protection Box Wrap-L

**Frequency:** 8.2MHz(\*) / 58KHz / 66KHz / 8.2MHz & 58KHz / 58KHz & 66KHz  
**Unit Dimension:** 72Dia'x54mm  
**Plastic Color:** Gray, White or Customized  
**Lock:** Magnetic Locking  
**Packing Details:** 100pcs/ctn; 12.0Kgs/ctn; 0.036cbm/ctn



#### AS1027 Triple Protection Box Wrap-M

**Frequency:** 8.2MHz / 58KHz  
**Unit Dimension:** 72Dia'x51mm  
**Plastic Color:** Gray, White or Customized  
**Lock:** Magnetic Locking  
**Packing Details:** 100pcs/ctn; 10kgs/ctn; 0.036cbm/ctn



#### AS1046 Dummy Spider Wrap

**Frequency:** 8.2MHz(\*) / 58KHz  
**Unit Dimension:** 72Dia'x45mm  
**Plastic Color:** Gray, White or Customized  
**Lock:** Magnetic Locking  
**Packing Details:** 100pcs/ctn; 9kgs/ctn; 0.036cbm/ctn



#### AS1030 Alarm Milk Powder Protector

**Frequency:** 8.2MHz / 58KHz / 8.2MHz & 58KHz  
**Unit Dimension:** 140Dia'x68mm  
**Plastic Color:** Gray, White or Customized  
**Lock:** Magnetic Locking  
**Lanyard Type:** Metal Cable  
**Lanyard Length:** 200mm or Customized  
**Lanyard Color:** Black or Customized  
**Packing Details:** 25pcs/ctn; 5.5kgs/ctn; 0.033cbm/ctn



#### AS1038 Alarm Protector

**Frequency:** 8.2MHz / 58KHz  
**Unit Dimension:** 57Dia'x38x360mm  
**Plastic Color:** Black  
**Lock:** Magnetic Locking  
**Lanyard Type:** Metal Cable  
**Lanyard Color:** Black or Customized  
**Packing Details:** 150pcs/ctn; 14kgs/ctn; 0.028cbm/ctn  
**Remark:** Cable length optional 720/250/500mm



#### AS1053 Triple Protection Cable Lock

**Frequency:** 8.2MHz / 58KHz  
**Unit Dimension:** 84.5x38x20mm  
**Plastic Color:** Gray, White or Customized  
**Lock:** Magnetic Locking  
**Lanyard Length:** 175mm/1200mm  
**Packing Details:** 100pcs/ctn; 7kgs/ctn; 0.028cbm/ctn





#### AS1010 Triple Protection Cable Lock-N

**Frequency:** 8.2MHz / 58KHz  
**Unit Dimension:** 83x34x23mm  
**Plastic Color:** Gray, White or Customized  
**Lock:** Magnetic Locking  
**Lanyard Length:** 175mm/1200mm  
**Packing Details:** 100pcs/ctn; 6Kgs/ctn; 0.028cbm/ctn



#### AS1011 Single Protection Cable Lock-D

**Frequency:** 8.2MHz / 58KHz / 8.2MHz & 58KHz  
**Unit Dimension:** 83x34x23mm  
**Plastic Color:** Gray, White or Customized  
**Lock:** Magnetic Locking  
**Lanyard Length:** 175mm/1200mm  
**Packing Details:** 100pcs/ctn; 6kgs/ctn; 0.028cbm/ctn



#### AS1022 Triple Protection Functional Tag

**Frequency:** 8.2MHz / 58KHz  
**Unit Dimension:** 90x38x25mm  
**Plastic Color:** Gray, White or Customized  
**Lock:** Magnetic Locking  
**Lanyard Length:** 175mm/1200mm  
**Packing Details:** 100pcs/ctn; 5.5kgs/ctn; 0.028cbm/ctn



#### AS1060 Double Protection Cable Lock

**Frequency:** 58K / 8.2MHz  
**Unit Dimension:** 52x31x23mm  
**Plastic Color:** Grey, White or Customized  
**Lock:** Magnetic Locking  
**Lanyard Length:** 250mm or customized  
**Packing Details:** 500pcs/ctn; 13kgs/ctn; 0.036cbm/ctn



#### AS1012 Double Protection Tag

**Frequency:** 8.2MHz / 58KHz  
**Unit Dimension:** 54x41x25mm  
**Plastic Color:** Gray, White or Customized  
**Lock:** Magnetic Locking  
**Pin Length:** 16 / 19mm or Customized  
**Pin Shaft:** Smooth Pin / Serrated Pin  
**Packing Details:** 250pcs/ctn; 6kgs/ctn; 0.033cbm/ctn



#### AS1013 Single Protection Pin Without Lanyard

**Frequency:** N/A  
**Unit Dimension:** 42mmDia'  
**Plastic Color:** Gray, White or Customized  
**Lock:** N/A  
**Pin Length:** 16 / 19mm or Customized  
**Pin Shaft:** Smooth Pin / Serrated Pin  
**Packing Details:** 250pcs/ctn; 8kgs/ctn; 0.033cbm/ctn



#### AS1018 Double Protection Pin

**Frequency:** 8.2MHz / 58KHz  
**Unit Dimension:** 50x39x24mm  
**Plastic Color:** Gray, White or Customized  
**Lock:** N/A  
**Pin Length:** 16 / 19mm or Customized  
**Pin Shaft:** Smooth Pin / Serrated Pin  
**Packing Details:** 250pcs/ctn; 8kgs/ctn; 0.033cbm/ctn



#### AS1019 Triple Protection Pin

**Frequency:** 8.2MHz / 58KHz  
**Unit Dimension:** 50x39x24mm  
**Plastic Color:** Gray, White or Customized  
**Lock:** N/A  
**Pin Length:** 16 / 19mm or Customized  
**Pin Shaft:** Smooth Pin / Serrated Pin  
**Packing Details:** 250pcs/ctn; 9kgs/ctn; 0.033cbm/ctn



#### AS1014 Double Protection Pin With Lanyard

**Frequency:** N/A  
**Unit Dimension:** 42mmDia'  
**Plastic Color:** Gray, White or Customized  
**Lock:** N/A  
**Pin Length:** 16 / 19mm or Customized  
**Pin Shaft:** Smooth Pin / Serrated Pin  
**Packing Details:** 250pcs/ctn; 10kgs/ctn; 0.033cbm/ctn



#### AS1015 Single Protection Pin With Lanyard

**Frequency:** N/A  
**Unit Dimension:** 42mmDia'  
**Plastic Color:** Gray, White or Customized  
**Lock:** N/A  
**Pin Length:** 16 / 19mm or Customized  
**Pin Shaft:** Smooth Pin / Serrated Pin  
**Packing Details:** 250pcs/ctn; 10kgs/ctn; 0.033cbm/ctn





### HD2001 Mini Square

**Frequency:** 8.2MHz(\*)  
**Unit Dimension:** 48x42mm  
**Plastic Color:** Gray, White or Customized  
**Lock:** Magnetic Locking  
**Packing Details:** 1000pcs/ctn; 10kgs/ctn; 0.028cbm/ctn



### HD2002 Large Square

**Frequency:** 8.2MHz(\*)  
**Unit Dimension:** 70x58mm  
**Plastic Color:** Gray, White or Customized  
**Lock:** Magnetic Locking  
**Packing Details:** 500pcs/ctn; 10kgs/ctn; 0.033cbm/ctn



### HD2003 New Mini Square

**Frequency:** 8.2MHz(\*)  
**Unit Dimension:** 52x43mm  
**Plastic Color:** Gray, White or Customized  
**Lock:** Magnetic Locking  
**Packing Details:** 1000pcs/ctn; 11.5kgs/ctn; 0.033cbm/ctn



### HD2007 Mini Round

**Frequency:** 8.2MHz(\*)  
**Unit Dimension:** 42mmDia'  
**Plastic Color:** Gray, White or Customized  
**Lock:** Magnetic Locking  
**Packing Details:** 1000pcs/ctn; 9kgs/ctn; 0.028cbm/ctn



### HD2009 Mini Alpha

**Frequency:** 8.2MHz(\*)  
**Unit Dimension:** 50mmDia'  
**Plastic Color:** Gray, White or Customized  
**Lock:** Magnetic Locking  
**Packing Details:** 1000pcs/ctn; 11.5kgs/ctn; 0.036cbm/ctn



### HD2010 New Mini Alpha

**Frequency:** 8.2MHz(\*)  
**Unit Dimension:** 50mmDia'  
**Plastic Color:** Gray, White or Customized  
**Lock:** Magnetic Locking  
**Packing Details:** 1000pcs/ctn; 12kgs/ctn; 0.036cbm/ctn



### HD2011 Alpha 60

**Frequency:** 8.2MHz(\*)  
**Unit Dimension:** 60mmDia'  
**Plastic Color:** Gray, White or Customized  
**Lock:** Magnetic Locking  
**Packing Details:** 500pcs/ctn; 8kgs/ctn; 0.033cbm/ctn



### HD2013 R50 Dome

**Frequency:** 8.2MHz(\*)  
**Unit Dimension:** 50Dia'x20mm  
**Plastic Color:** Gray, White or Customized  
**Lock:** Magnetic Locking  
**Packing Details:** 1000pcs/ctn; 10.5kgs/ctn; 0.036cbm/ctn



### HD2014 UFO-Commander

**Frequency:** 8.2MHz(\*)  
**Unit Dimension:** 53Dia'x21mm  
**Plastic Color:** Gray, White or Customized  
**Lock:** Magnetic Locking  
**Packing Details:** 1000pcs/ctn; 11kgs/ctn; 0.036cbm/ctn



### HD2016 Mini Cone

**Frequency:** 8.2MHz(\*)  
**Unit Dimension:** 45mmDia'  
**Plastic Color:** Gray, White or Customized  
**Lock:** Magnetic Locking  
**Packing Details:** 1000pcs/ctn; 10kgs/ctn; 0.028cbm/ctn



### HD2017 Super Cone

**Frequency:** 8.2MHz(\*)  
**Unit Dimension:** 40mmDia'  
**Plastic Color:** Gray, White or Customized  
**Lock:** Magnetic Locking  
**Packing Details:** 1000pcs/ctn; 10kgs/ctn; 0.028cbm/ctn



### HD2020 Cone

**Frequency:** 8.2MHz(\*)  
**Unit Dimension:** 64mmDia'  
**Plastic Color:** Gray, White or Customized  
**Lock:** Magnetic Locking  
**Packing Details:** 500pcs/ctn; 8kgs/ctn; 0.033cbm/ctn



#### HD2022 M50 without Pin

**Frequency:** 8.2MHz(\*) / 58KHz / 66KHz  
**Unit Dimension:** 50mmDia'  
**Plastic Color:** Gray, White or Customized  
**Lock:** Magnetic Locking  
**Packing Details:** 500pcs/ctn; 7kgs/ctn; 0.028cbm/ctn



#### HD2023 R50

**Frequency:** 8.2MHz(\*)  
**Unit Dimension:** 50mmDia'  
**Plastic Color:** Gray, White or Customized  
**Lock:** Magnetic Locking  
**Packing Details:** 1000pcs/ctn; 12kgs/ctn; 0.036cbm/ctn



#### HD2024 S50

**Frequency:** 8.2MHz(\*)  
**Unit Dimension:** 50mmDia'  
**Plastic Color:** Gray, White or Customized  
**Lock:** Magnetic Locking  
**Packing Details:** 1000pcs/ctn; 12kgs/ctn; 0.036cbm/ctn



#### HD2028 Hard Tag For Alarming Pin

**Frequency:** 8.2MHz(\*) / 58KHz / 8.2MHz & 58KHz  
**Unit Dimension:** 40mmDia'  
**Plastic Color:** Gray, White or Customized  
**Lock:** Magnetic Locking  
**Packing Details:** 1000pcs/ctn; 8.5kgs/ctn; 0.028cbm/ctn



#### HD2029 Mini Pencil

**Frequency:** 8.2MHz / 58KHz / 66KHz  
**Unit Dimension:** 50x14x20mm  
**Plastic Color:** Gray, White or Customized  
**Lock:** Magnetic Locking  
**Packing Details:** 1000pcs/ctn; 9kgs/ctn; 0.018cbm/ctn



#### HD2030 Max Pencil

**Frequency:** 8.2MHz / 58KHz / 66KHz  
**Unit Dimension:** 51x13x19mm  
**Plastic Color:** Gray, White or Customized  
**Lock:** Magnetic Locking  
**Packing Details:** 1000pcs/ctn; 9.5kgs/ctn; 0.018cbm/ctn



### HD2031 Di Pencil

**Frequency:** 8.2MHz / 58KHz  
**Unit Dimension:** 45.5x19x12mm  
**Plastic Color:** Gray, White or Customized  
**Lock:** Magnetic Locking  
**Packing Details:** 1000pcs/ctn; 9.5kgs/ctn; 0.018cbm/ctn



### HD2032 Super Pencil

**Frequency:** 8.2MHz / 58KHz / 66KHz  
**Unit Dimension:** 54.8x19x13mm  
**Plastic Color:** Gray, White or Customized  
**Lock:** Magnetic Locking  
**Packing Details:** 1000pcs/ctn; 11kgs/ctn; 0.018cbm/ctn



### HD2033 Ultra Pencil

**Frequency:** 8.2MHz / 58KHz  
**Unit Dimension:** 45x19x12mm  
**Plastic Color:** Gray, White or Customized  
**Lock:** Magnetic Locking  
**Packing Details:** 1000pcs/ctn; 8kgs/ctn; 0.013cbm/ctn



### HD2034 Long Pencil

**Frequency:** 8.2MHz / 58KHz / 66KHz  
**Unit Dimension:** 61.6x15.4x19.8mm  
**Plastic Color:** Gray, White or Customized  
**Lock:** Magnetic Locking  
**Packing Details:** 1000pcs/ctn; 12.5kgs/ctn; 0.022cbm/ctn



### HD2035 Fish Tag

**Frequency:** 8.2MHz / 58KHz  
**Unit Dimension:** 54x18.4x15.2mm  
**Plastic Color:** Gray, White or Customized  
**Lock:** Magnetic Locking  
**Packing Details:** 1000pcs/ctn; 10kgs/ctn; 0.018cbm/ctn



### HD2036 Light Weight Tag

**Frequency:** 8.2MHz / 58KHz  
**Unit Dimension:** 54x18.4x15.2mm  
**Plastic Color:** Gray, White or Customized  
**Lock:** Magnetic Locking  
**Packing Details:** 1000pcs/ctn; 10kgs/ctn; 0.018cbm/ctn



### HD2037 New Pencil

**Frequency:** 8.2MHz  
**Unit Dimension:** 46.5x16.5x15.5mm  
**Plastic Color:** Gray, White or Customized  
**Lock:** Magnetic Locking  
**Packing Details:** 1000pcs/ctn; 7.5kgs/ctn; 0.018cbm/ctn



### HD2210 Ultra Fish Tag

**Frequency:** 58KHz  
**Unit Dimension:** 72x17x18mm  
**Plastic Color:** Gray, White or Customized  
**Lock:** Magnetic Locking  
**Packing Details:** 1000pcs/ctn; 14.7kgs/ctn; 0.028cbm/ctn



### HD2045 Hard Tag

**Frequency:** 8.2MHz / 58KHz / 66KHz  
**Unit Dimension:** 69x26x22mm  
**Plastic Color:** Gray, White or Customized  
**Lock:** Magnetic Locking  
**Packing Details:** 1000pcs/ctn; 14kgs/ctn; 0.033cbm/ctn



### HD2046 Hard Tag

**Frequency:** 8.2MHz / 58KHz  
**Unit Dimension:** 51x26x22mm  
**Plastic Color:** Gray, White or Customized  
**Lock:** Magnetic Locking  
**Packing Details:** 1000pcs/ctn; 10.5kgs/ctn; 0.024cbm/ctn



### HD2047 Hard Tag

**Frequency:** 8.2MHz(\*) / 58KHz  
**Unit Dimension:** 50x26x18mm  
**Plastic Color:** Gray, White or Customized  
**Lock:** Magnetic Locking  
**Packing Details:** 1000pcs/ctn; 7kgs/ctn; 0.028cbm/ctn



### HD2053 Two-in-One Locking Tag

**Frequency:** 8.2MHz / 58KHz / 66KHz  
**Unit Dimension:** 80.8x30.2x20.7mm  
**Plastic Color:** Gray, White or Customized  
**Lock:** Magnetic Locking & Compatible with Sensormatic Detacher  
**Packing Details:** 500pcs/ctn; 9kgs/ctn; 0.028cbm/ctn





### HD2057 X Pencil

**Frequency:** 8.2MHz / 58KHz  
**Unit Dimension:** 25x30x20mm  
**Plastic Color:** Gray, White or Customized  
**Lock:** Magnetic Locking  
**Packing Details:** 2000pcs/ctn; 17.5kgs/ctn; 0.028cbm/ctn



### HD2058 Ark Tag-AX

**Frequency:** 8.2MHz / 58KHz  
**Unit Dimension:** 27x26x19mm  
**Plastic Color:** Gray, White or Customized  
**Lock:** Magnetic Locking  
**Packing Details:** 1000pcs/ctn; 8kgs/ctn; 0.018cbm/ctn



### HD2059 Hard Tag

**Frequency:** 8.2MHz / 58KHz / 66KHz  
**Unit Dimension:** 45x36.8x21.5mm  
**Plastic Color:** Gray, White or Customized  
**Lock:** Magnetic Locking  
**Packing Details:** 1000pcs/ctn; 14kgs/ctn; 0.036cbm/ctn



### HD2060 Hard Tag

**Frequency:** 8.2MHz / 58KHz  
**Unit Dimension:** 24.6x23x18.2mm  
**Plastic Color:** Gray, White or Customized  
**Lock:** Magnetic Locking  
**Packing Details:** 2000pcs/ctn; 13kgs/ctn; 0.024cbm/ctn



### HD2061 Mini Comma

**Frequency:** 8.2MHz / 58KHz  
**Unit Dimension:** 44x32x21mm  
**Plastic Color:** Gray, White or Customized  
**Lock:** Magnetic Locking  
**Packing Details:** 1000pcs/ctn; 12kgs/ctn; 0.028cbm/ctn



### HD2065 Tear Drop-MX

**Frequency:** 8.2MHz / 58KHz / 66KHz  
**Unit Dimension:** 55x40x20mm  
**Plastic Color:** Gray, White or Customized  
**Lock:** Magnetic Locking  
**Packing Details:** 1000pcs/ctn; 12kgs/ctn; 0.033cbm/ctn



### HD2067 Gown Mate

**Frequency:** 8.2MHz / 58KHz / 66KHz  
**Unit Dimension:** 39.5x18.5x8.2mm  
**Plastic Color:** Gray, White or Customized  
**Lock:** N/A  
**Packing Details:** 2000pcs/ctn; 11kgs/ctn; 0.022cbm/ctn



### HD2068 AM Diamond Tag

**Frequency:** 58KHz  
**Unit Dimension:** 36x22x8.6mm  
**Plastic Color:** Gray, White or Customized  
**Lock:** N/A  
**Packing Details:** 2000pcs/ctn; 12kgs/ctn; 0.024cbm/ctn



### HD2071 Stop Lock

**Frequency:** N/A  
**Unit Dimension:** 38.9x19x15.42mm  
**Inner Dia:** 6mm  
**Plastic Color:** Red or Customized  
**Lock:** Magnetic Locking  
**Packing Details:** 2000pcs/ctn; 12kgs/ctn; 0.028cbm/ctn



### HD2072 Golf Tag I

**Frequency:** 58KHz  
**Unit Dimension:** 35x34x39.5mm  
**Plastic Color:** Gray, White or Customized  
**Lock:** Magnetic Locking  
**Packing Details:** 500pcs/ctn; 11kgs/ctn; 0.033cbm/ctn



### HD2073 Golf Tag II

**Frequency:** 8.2MHz / 58KHz  
**Unit Dimension:** 61.5x53x20.1mm  
**Plastic Color:** Gray, White or Customized  
**Lock:** Magnetic Locking  
**Packing Details:** 250pcs/ctn; 8kgs/ctn; 0.024cbm/ctn



### HD2074 Golf Tag IV

**Frequency:** 8.2MHz / 58KHz  
**Unit Dimension:** 56x33.5x28.6mm  
**Plastic Color:** Gray, White or Customized  
**Lock:** Magnetic Locking  
**Packing Details:** 500pcs/ctn; 12kgs/ctn; 0.028cbm/ctn



### HD2081 Mini Dome

**Frequency:** 8.2MHz(\*) / 58KHz  
**Unit Dimension:** 45mmDia'  
**Plastic Color:** Gray, White or Customized  
**Lock:** Magnetic Locking  
**Pin Length:** 16 / 19mm or Customized  
**Pin Shaft:** Smooth Pin / Serrated Pin  
**Packing Details:** 500pcs/ctn; 7kgs/ctn; 0.028cbm/ctn



### HD2082 Dome

**Frequency:** 8.2MHz(\*) / 58KHz  
**Unit Dimension:** 54mmDia'  
**Plastic Color:** Gray, White or Customized  
**Lock:** Magnetic Locking  
**Pin Length:** 16 / 19mm or Customized  
**Pin Shaft:** Smooth Pin / Serrated Pin  
**Packing Details:** 500pcs/ctn; 9kgs/ctn; 0.036cbm/ctn



### HD2084 Golf

**Frequency:** 8.2MHz(\*) / 58KHz / 66KHz  
**Unit Dimension:** 63mmDia'  
**Plastic Color:** Gray, White or Customized  
**Lock:** Magnetic Locking  
**Pin Length:** 16 / 19mm or Customized  
**Pin Shaft:** Smooth Pin / Serrated Pin  
**Packing Details:** 250pcs/ctn; 6kgs/ctn; 0.028cbm/ctn



### HD2085 X50 with Pin

**Frequency:** 8.2MHz(\*) / 58KHz  
**Unit Dimension:** 50mmDia'  
**Plastic Color:** Gray, White or Customized  
**Lock:** Magnetic Locking  
**Pin Length:** 16 / 19mm or Customized  
**Pin Shaft:** Smooth Pin / Serrated Pin  
**Packing Details:** 500pcs/ctn; 8kgs/ctn; 0.036cbm/ctn



### HD2086 X40 with Pin

**Frequency:** 8.2MHz(\*)  
**Unit Dimension:** 40mmDia'  
**Plastic Color:** Gray, White or Customized  
**Lock:** Magnetic Locking  
**Pin Length:** 16 / 19mm or Customized  
**Pin Shaft:** Smooth Pin / Serrated Pin  
**Packing Details:** 1000pcs/ctn; 11kgs/ctn; 0.039cbm/ctn



### HD2087 X60 with Pin

**Frequency:** 8.2MHz(\*) / 58KHz  
**Unit Dimension:** 60mmDia'  
**Plastic Color:** Gray, White or Customized  
**Lock:** Magnetic Locking  
**Pin Length:** 16 / 19mm or Customized  
**Pin Shaft:** Smooth Pin / Serrated Pin  
**Packing Details:** 250pcs/ctn; 6kgs/ctn; 0.028cbm/ctn



#### HD2090 New X50 with Own Pin

**Frequency:** 8.2MHz(\*)  
**Unit Dimension:** 50mmDia'  
**Plastic Color:** Gray, White or Customized  
**Lock:** Magnetic Locking  
**Pin Length:** 16 / 19mm or Customized  
**Pin Shaft:** Smooth Pin / Serrated Pin  
**Packing Details:** 500pcs/ctn; 8kgs/ctn; 0.033cbm/ctn



#### HD2175 UFO-Commander with Own Pin

**Frequency:** 8.2MHz(\*)  
**Unit Dimension:** 42Dia'x30mm  
**Plastic Color:** Gray, White or Customized  
**Lock:** Magnetic Locking  
**Pin Length:** 17mm  
**Pin Shaft:** Smooth Pin  
**Packing Details:** 500pcs/ctn; 7kgs/ctn; 0.028cbm/ctn



#### HD2091 Picco 50

**Frequency:** 8.2MHz(\*)  
**Unit Dimension:** 52mmDia'  
**Plastic Color:** Gray, White or Customized  
**Lock:** Magnetic Locking  
**Pin Length:** 16 / 19mm or Customized  
**Pin Shaft:** Smooth Pin / Serrated Pin  
**Packing Details:** 500pcs/ctn; 8kgs/ctn; 0.033cbm/ctn



#### HD2092 Picco 40

**Frequency:** 8.2MHz(\*)  
**Unit Dimension:** 42mmDia'  
**Plastic Color:** Gray, White or Customized  
**Lock:** Magnetic Locking  
**Pin Length:** 16 / 19mm or Customized  
**Pin Shaft:** Smooth Pin / Serrated Pin  
**Packing Details:** 500pcs/ctn; 7kgs/ctn; 0.028cbm/ctn



#### HD2094 Picco 30

**Frequency:** 8.2MHz(\*)  
**Unit Dimension:** 30mmDia'  
**Plastic Color:** Gray, White or Customized  
**Lock:** Magnetic Locking  
**Pin Length:** 16 / 19mm or Customized  
**Pin Shaft:** Smooth Pin / Serrated Pin  
**Packing Details:** 1000pcs/ctn; 8kgs/ctn; 0.028cbm/ctn



#### HD2149 Yurta Tag With Hole

**Frequency:** 8.2MHz(\*)  
**Unit Dimension:** 30Dia'x18mm  
**Plastic Color:** Gray, White or Customized  
**Lock:** Magnetic Locking  
**Packing Details:** 1000pcs/ctn; 8kgs/ctn; 0.028cbm/ctn



### HD2181 Yurta Tag with Own Pin

**Frequency:** 8.2MHz(\*)  
**Unit Dimension:** 33Dia x 24.1mm  
**Plastic Color:** Gray, White or Customized  
**Lock:** Magnetic Locking  
**Pin Length:** 16mm  
**Pin Shaft:** Smooth Pin  
**Packing Details:** 1000pcs/ctn; 10kgs/ctn; 0.033cbm/ctn



### HD2097 Razorpack Tag

**Frequency:** 8.2MHz / 58KHz  
**Unit Dimension:** 43.5x28x19.9mm  
**Plastic Color:** Gray, White or Customized  
**Lock:** Magnetic Locking  
**Pin Length:** 18.5mm or Customized  
**Pin Shaft:** Smooth Pin  
**Packing Details:** 500pcs/ctn; 8.5kgs/ctn; 0.018cbm/ctn



### HD2099 Razorpack Tag

**Frequency:** 8.2MHz(\*) / 58KHz / 8.2MHz & 58KHz  
**Unit Dimension:** 57x55x24mm  
**Plastic Color:** Gray, White or Customized  
**Lock:** Magnetic Locking  
**Pin Length:** 16mm or Customized  
**Pin Shaft:** Smooth  
**Pin Packing Details:** 500pcs/ctn; 9kgs/ctn; 0.033cbm/ctn



### HD2100 Clutch

**Frequency:** N/A  
**Unit Dimension:** 27Dia x 19mm  
**Plastic Color:** Gray, White or Customized  
**Lock:** Magnetic Locking  
**Packing Details:** 2000pcs/ctn; 11kgs/ctn; 0.028cbm/ctn



### HD2101 Clutch

**Frequency:** N/A  
**Unit Dimension:** 19Dia x 16mm  
**Plastic Color:** Gray, White or Customized  
**Lock:** Magnetic Locking  
**Packing Details:** 5000pcs/ctn; 18kgs/ctn; 0.022cbm/ctn



### HD2150 New Clamp Tag

**Frequency:** 8.2MHz / 58KHz  
**Unit Dimension:** 57x50x18mm  
**Plastic Color:** Gray, White or Customized  
**Lock:** Magnetic Locking  
**Packing Details:** 500pcs/ctn; 15kgs/ctn; 0.033cbm/ctn



#### HD2105 Mickey Pencil-B with Lanyard

**Frequency:** 8.2MHz / 58KHz / 66KHz  
**Unit Dimension:** 53x12x20mm  
**Plastic Color:** Gray, White or Customized  
**Lock:** Magnetic Locking  
**Lanyard Type:** LD3603  
**Lanyard Length:** 175mm or Customized  
**Lanyard Color:** Black, White or Customized  
**Pin Length:** 16 / 19mm or Customized  
**Pin Shaft:** Smooth Pin / Serrated Pin  
**Misc Info:** With Pin  
**Packing Details:** 1000pcs/ctn; 11kgs/ctn; 0.028cbm/ctn



#### HD2107 Ark Tag-MX With LD3603

**Frequency:** 8.2MHz / 58KHz / 66KHz  
**Unit Dimension:** 39x25x19mm  
**Plastic Color:** Gray, White or Customized  
**Lock:** Magnetic Locking  
**Lanyard Type:** LD3603  
**Lanyard Length:** 175mm or Customized  
**Lanyard Color:** Black, White or Customized  
**Pin Length:** 16 / 19mm or Customized  
**Pin Shaft:** Smooth Pin / Serrated Pin  
**Misc Info:** With Pin  
**Packing Details:** 1000pcs/ctn; 11kgs/ctn; 0.028cbm/ctn



#### HD2108 Ark Tag-MX With LD3604

**Frequency:** 8.2MHz / 58KHz / 66KHz  
**Unit Dimension:** 39x25x19mm  
**Plastic Color:** Gray, White or Customized  
**Lock:** Magnetic Locking  
**Lanyard Type:** LD3604  
**Lanyard Length:** 150mm  
**Lanyard Color:** Clear or Customized  
**Pin Length:** 17mm or Customized  
**Pin Shaft:** Smooth Pin / Serrated Pin  
**Misc Info:** With Pin  
**Packing Details:** 500pcs/ctn; 7kgs/ctn; 0.022cbm/ctn



#### HD2109 Ark Tag-MX

**Frequency:** 8.2MHz / 58KHz / 66KHz  
**Unit Dimension:** 39x25x19mm  
**Plastic Color:** Gray, White or Customized  
**Lock:** Magnetic Locking  
**Lanyard Type:** N/A  
**Lanyard Length:** N/A  
**Lanyard Color:** N/A  
**Misc Info:** N/A  
**Packing Details:** 1000pcs/ctn; 9kgs/ctn; 0.022cbm/ctn



#### HD2110 Hard Tag With Lanyard

**Frequency:** 8.2MHz / 58KHz  
**Unit Dimension:** 28.5x18.5x23mm  
**Plastic Color:** Gray, White or Customized  
**Lock:** Magnetic Locking  
**Lanyard Type:** LD3603  
**Lanyard Length:** 60mm or Customized  
**Lanyard Color:** Black, White or Customized  
**Pin Length:** 16 / 19mm or Customized  
**Pin Shaft:** Smooth Pin / Serrated Pin  
**Misc Info:** With Pin  
**Packing Details:** 1000pcs/ctn; 8kgs/ctn; 0.018cbm/ctn



### BD3301 R50 Ink Tag

**Frequency:** 8.2MHz(\*) / 58KHz / 66KHz  
**Unit Dimension:** 50Dia"x20mm  
**Plastic Color:** Gray, White or Customized  
**Lock:** Magnetic Locking  
**Ink Color:** Yellow, Red, Blue or Customized  
**Packing Details:** 500pcs/ctn; 8kgs/ctn; 0.028cbm/ctn



### BD3302 R50 Ink Tag

**Frequency:** 8.2MHz(\*) / 58KHz  
**Unit Dimension:** 50Dia"x19mm  
**Plastic Color:** Gray, White or Customized  
**Lock:** Magnetic Locking  
**Ink Color:** Yellow, Red, Blue or Customized  
**Packing Details:** 1000pcs/ctn; 13kgs/ctn; 0.036cbm/ctn



### BD3304 Ink Tag

**Frequency:** 8.2MHz / 58KHz / 66KHz  
**Unit Dimension:** 55.7x32x17.7mm  
**Plastic Color:** Gray, White or Customized  
**Lock:** Magnetic Locking  
**Ink Color:** Yellow, Red, Blue or Customized  
**Misc Info:** Printing Nonavailable  
**Packing Details:** 1000pcs/ctn; 12.5kgs/ctn; 0.028cbm/ctn



### BD3305 X60 Ink Tag

**Frequency:** 8.2MHz(\*)  
**Unit Dimension:** 60.3mmDia'  
**Plastic Color:** Gray, White or Customized  
**Lock:** Magnetic Locking  
**Ink Color:** Yellow, Red, Blue or Customized  
**Pin Length:** 16 / 19mm or Customized  
**Pin Shaft:** Smooth Pin / Serrated Pin  
**Packing Details:** 500pcs/ctn; 12kgs/ctn; 0.043cbm/ctn



### BD3306 Ink Tag With Own Pin

**Frequency:** 8.2MHz(\*)  
**Unit Dimension:** 56mmDia'  
**Plastic Color:** Gray, White or Customized  
**Lock:** Magnetic Locking  
**Ink Color:** Yellow, Red, Blue or Customized  
**Pin Length:** 16 / 19mm or Customized  
**Pin Shaft:** Smooth Pin / Serrated Pin  
**Packing Details:** 500pcs/ctn; 11kgs/ctn; 0.043cbm/ctn



### BD3307 Flat Dome

**Frequency:** 8.2MHz(\*)  
**Unit Dimension:** 54Dia"x22mm  
**Plastic Color:** Clear or Customized  
**Lock:** Magnetic Locking  
**Ink Color:** Yellow, Red, Blue or Customized  
**Pin Length:** 16 / 19mm or Customized  
**Pin Shaft:** Smooth Pin / Serrated Pin  
**Packing Details:** 500pcs/ctn; 11kgs/ctn; 0.033cbm/ctn



### BD3308 Dome Ink Tag

**Frequency:** 8.2MHz(\*) / 58KHz / 58KHz & 8.2MHz  
**Unit Dimension:** 53Dia"x23mm  
**Plastic Color:** Gray, White or Customized  
**Lock:** Magnetic Locking  
**Ink Color:** Yellow, Red, Blue or Customized  
**Pin Length:** 16 / 19mm or Customized  
**Pin Shaft:** Smooth Pin / Serrated Pin  
**Packing Details:** 500pcs/ctn; 11kgs/ctn; 0.036cbm/ctn



### BD3309 Dome Ink Tag

**Frequency:** 8.2MHz(\*)  
**Unit Dimension:** 54Dia"x23mm  
**Plastic Color:** Gray, White or Customized  
**Lock:** Magnetic Locking  
**Ink Color:** Yellow, Red, Blue or Customized  
**Pin Length:** 16 / 19mm or Customized  
**Pin Shaft:** Smooth Pin / Serrated Pin  
**Packing Details:** 500pcs/ctn; 11kgs/ctn; 0.036cbm/ctn



### BD3310 X50 Ink Tag

**Frequency:** 8.2MHz(\*)  
**Unit Dimension:** 50Dia"x23mm  
**Plastic Color:** Gray, White or Customized  
**Lock:** Magnetic Locking  
**Ink Color:** Yellow, Red, Blue or Customized  
**Pin Length:** 16 / 19mm or Customized  
**Pin Shaft:** Smooth Pin / Serrated Pin  
**Packing Details:** 500pcs/ctn; 10kgs/ctn; 0.033cbm/ctn



### BD3311 Shell Tag

**Frequency:** 8.2MHz(\*) / 58KHz / 58KHz & 8.2MHz  
**Unit Dimension:** 50Dia"x22.5mm  
**Plastic Color:** Gray, White or Customized  
**Lock:** Magnetic Locking  
**Ink Color:** Yellow, Red, Blue or Customized  
**Pin Length:** 16 / 19mm or Customized  
**Pin Shaft:** Smooth Pin / Serrated Pin  
**Packing Details:** 500pcs/ctn; 10kgs/ctn; 0.036cbm/ctn



### BD3314 Ink Pin

**Frequency:** N/A  
**Unit Dimension:** 41.7x10.6x26mm  
**Plastic Color:** Gray, White or Customized  
**Lock:** N/A  
**Ink Color:** Yellow, Red, Blue or Customized  
**Pin Length:** 16 / 19mm or Customized  
**Pin Shaft:** Smooth Pin / Serrated Pin  
**Packing Details:** 1000pcs/ctn; 7kgs/ctn; 0.028cbm/ctn



### BD3315 Ink Pin

**Frequency:** N/A  
**Unit Dimension:** 37.5Dia"x10mm  
**Plastic Color:** Gray, White or Customized  
**Lock:** N/A  
**Ink Color:** Yellow, Red, Blue or Customized  
**Pin Length:** 16 / 19mm or Customized  
**Pin Shaft:** Smooth Pin / Serrated Pin  
**Packing Details:** 1000pcs/ctn; 7.5kgs/ctn; 0.028cbm/ctn





### BD3316 Ink Pin-AX

**Frequency:** N/A  
**Unit Dimension:** 45x26x12.8mm  
**Plastic Color:** Clear or Customized  
**Lock:** N/A  
**Ink Color:** Yellow, Red, Blue or Customized  
**Pin Length:** 16 / 19mm or Customized  
**Pin Shaft:** Smooth Pin / Serrated Pin  
**Packing Details:** 1000pcs/ctn; 9.5kgs/ctn; 0.028cbm/ctn



### BD3317 Ink Pin-BX

**Frequency:** N/A  
**Unit Dimension:** 45x30x11mm  
**Plastic Color:** Clear or Customized  
**Lock:** N/A  
**Ink Color:** Yellow, Red, Blue or Customized  
**Pin Length:** 16 / 19mm or Customized  
**Pin Shaft:** Smooth Pin / Serrated Pin  
**Packing Details:** 1000pcs/ctn; 9kgs/ctn; 0.028cbm/ctn



### BD3319 Ink Pin

**Frequency:** N/A  
**Unit Dimension:** 41.7x28x10.7mm  
**Plastic Color:** Gray, White or Customized  
**Lock:** N/A  
**Ink Color:** Yellow, Red, Blue or Customized  
**Pin Length:** 16 / 19mm or Customized  
**Pin Shaft:** Smooth Pin / Serrated Pin  
**Packing Details:** 1000pcs/ctn; 6kgs/ctn; 0.028cbm/ctn



### HD2202 All-in-One Textile Tag

**Frequency:** 8.2MHz / 58KHz  
**Unit Dimension:** 61x20x30mm  
**Plastic Color:** Black+White or customized  
**Lock:** Magnetic Locking  
**Packing Details:** 1000pcs/ctn; 16.0kgs/ctn; 0.036cbm/ctn



### HD2216 All-in-One Transparent

**Frequency:** 8.2MHz / 58KHz  
**Unit Dimension:** 61x20x30mm  
**Plastic Color:** Black+Transparent  
**Lock:** Magnetic Locking  
**Packing Details:** 1000pcs/ctn; 16.0kgs/ctn; 0.036cbm/ctn



### HD2217 All-in-One Blister Tag

**Frequency:** 8.2MHz / 58KHz  
**Unit Dimension:** 55x42x32mm  
**Plastic Color:** Black+White or customized  
**Lock:** Magnetic Locking  
**Packing Details:** 500pcs/ctn; 9.0kgs/ctn; 0.036cbm/ctn



### HD2219 All-in-One Coil Tag

**Frequency:** 8.2MHz / 58KHz  
**Unit Dimension:** 65x49x30mm  
**Plastic Color:** Black+White or customized  
**Lock:** Magnetic Locking  
**Packing Details:** 500pcs/ctn; 10.0kgs/ctn; 0.028cbm/ctn



### HD2213 All-in-One Pad Lock

**Frequency:** 8.2MHz / 58KHz  
**Unit Dimension:** 81x35x32mm  
**Plastic Color:** Black+White or customized  
**Lock:** Magnetic Locking  
**Packing Details:** 500pcs/ctn; 13.0kgs/ctn; 0.028cbm/ctn



### HD2218 All-in-One Pad Lock

**Frequency:** 8.2MHz / 58KHz  
**Unit Dimension:** 61x58x35mm  
**Plastic Color:** Black+White or customized  
**Lock:** Magnetic Locking  
**Packing Details:** 500pcs/ctn; 14.0kgs/ctn; 0.039cbm/ctn



### BD3329 All-in-One Ink Tag

**Frequency:** 8.2MHz / 58KHz  
**Unit Dimension:** 61x20x30mm  
**Plastic Color:** Black+Transparent or Customized  
**Lock:** Magnetic Locking  
**Ink Color:** Red or Customized  
**Packing Details:** 1000pcs/ctn; 16.0kgs/ctn; 0.036cbm/ctn



### BT3052 All-in-One Wine Tag

**Frequency:** 58KHz  
**Unit Dimension:** 61x20x51mm  
**Plastic Color:** Green or Customized  
**Lock:** Magnetic Locking  
**Measurement In Protection:** 28mmDia' bottle neck  
**Packing Details:** 500pcs/ctn; 10.0kgs/ctn; 0.033cbm/ctn



### BT3053 All-in-One Champagne

**Frequency:** 58KHz  
**Unit Dimension:** 64x20x54mm  
**Plastic Color:** Yellow or Customized  
**Lock:** Magnetic Locking  
**Measurement In Protection:** 31mmDia' bottle neck  
**Packing Details:** 500pcs/ctn; 10.7kgs/ctn; 0.039cbm/ctn



### OP3817 Toolless Optical Tag

**Frequency:** 8.2MHz / 58KHz  
**Unit Dimension:** 42x40x31mm  
**Plastic Color:** Gray, White or Customized  
**Lock:** Magnetic Locking  
**Packing Details:** 250pcs/ctn; 11.0kgs/ctn; 0.039cbm/ctn



### OP3802 Optical Tag

**Frequency:** 8.2MHz / 58KHz  
**Unit Dimension:** 28.7x18x27mm  
**Plastic Color:** Gray, White or Customized  
**Lock:** Mechanical Locking  
**Packing Details:** 1000pcs/ctn; 10kgs/ctn; 0.018cbm/ctn



### OP3803 RG Tag

**Frequency:** 8.2MHz(\*) / EM  
**Unit Dimension:** 39x20.3x49.5mm  
**Plastic Color:** Gray, White or Customized  
**Lock:** Magnetic Locking  
**Packing Details:** 1000pcs/ctn; 10.0kgs/ctn; 0.033cbm/ctn



### OP3805 Optical Tag

**Frequency:** 8.2MHz / 58KHz  
**Unit Dimension:** 70.5x15.2x23.3mm/61x16x24mm  
**Plastic Color:** Black or Customized  
**Lock:** Mechanical Locking  
**Packing Details:** 1000pcs/ctn; 11kgs/ctn; 0.028cbm/ctn



### OP3813 Two Feet Tag

**Frequency:** 8.2MHz / 58KHz  
**Unit Dimension:** 52.5x31.2x24.5mm  
**Plastic Color:** Gray, White or Customized  
**Lock:** Magnetic Locking  
**Pin Length:** 18mm Customized  
**Pin Shaft:** Smooth Pin  
**Packing Details:** 1000pcs/ctn; 15kgs/ctn; 0.033cbm/ctn





### BT3001 Mini Square BT

**Frequency:** 8.2MHz(\*)  
**Unit Dimension:** 48x42mm  
**Plastic Color:** Gray, White or Customized  
**Lock:** Magnetic Locking  
**Lanyard Type:** Metal cable  
**Lanyard Length:** 480mm  
**Lanyard Color:** N/A  
**Misc Info:** With Ball  
**Packing Details:** 250pcs/ctn; 6kgs/ctn; 0.028cbm/ctn



### BT3002 Mini Square BT

**Frequency:** 8.2MHz(\*)  
**Unit Dimension:** 48x42mm  
**Plastic Color:** Gray, White or Customized  
**Lock:** Magnetic Locking  
**Lanyard Type:** Metal cable  
**Lanyard Length:** 160mm  
**Lanyard Color:** N/A  
**Misc Info:** With Ball  
**Packing Details:** 500pcs/ctn; 12kgs/ctn; 0.036cbm/ctn



### BT3003 Bottle Tag With Plastic Cable With Ball

**Frequency:** 8.2MHz(\*) / EM  
**Unit Dimension:** 56mmDia'  
**Plastic Color:** Gray, White or Customized  
**Lock:** Magnetic Locking  
**Lanyard Type:** Plastic cable  
**Lanyard Length:** 150mm  
**Lanyard Color:** White  
**Misc Info:** With Ball  
**Packing Details:** 250pcs/ctn; 6.5kgs/ctn; 0.028cbm/ctn



### BT3004 Bottle Tag With Plastic Cable Without Ball

**Frequency:** 8.2MHz(\*) / EM  
**Unit Dimension:** 56mmDia'  
**Plastic Color:** Gray, White or Customized  
**Lock:** Magnetic Locking  
**Lanyard Type:** Plastic cable  
**Lanyard Length:** 150mm  
**Lanyard Color:** White  
**Misc Info:** Without Ball  
**Packing Details:** 250pcs/ctn; 6.5kgs/ctn; 0.028cbm/ctn



### BT3005 Bottle Tag With Metal Cable 480mm

**Frequency:** 8.2MHz(\*) / EM  
**Unit Dimension:** 56mmDia'  
**Plastic Color:** Gray, White or Customized  
**Lock:** Magnetic Locking  
**Lanyard Type:** Metal cable  
**Lanyard Length:** 480mm  
**Lanyard Color:** N/A  
**Misc Info:** With Ball  
**Packing Details:** 250pcs/ctn; 9kgs/ctn; 0.036cbm/ctn



### BT3006 Bottle Tag With Metal Cable 160mm

**Frequency:** 8.2MHz(\*) / EM  
**Unit Dimension:** 56mmDia'  
**Plastic Color:** Gray, White or Customized  
**Lock:** Magnetic Locking  
**Lanyard Type:** Metal cable  
**Lanyard Length:** 160mm  
**Lanyard Color:** N/A  
**Misc Info:** With Ball  
**Packing Details:** 250pcs/ctn; 7kgs/ctn; 0.028cbm/ctn

**BT3007 Bottle Tag With Plastic Cable With Ball**

**Frequency:** 8.2MHz / 58KHz  
**Unit Dimension:** 36x30mm  
**Plastic Color:** Gray, White or Customized  
**Lock:** Magnetic Locking  
**Lanyard Type:** Plastic cable  
**Lanyard Length:** 150mm  
**Lanyard Color:** White  
**Misc Info:** With Ball  
**Packing Details:** 500pcs/ctn; 10kgs/ctn; 0.033cbm/ctn

**BT3008 Bottle Tag With Plastic Cable Without Ball**

**Frequency:** 8.2MHz / 58KHz  
**Unit Dimension:** 36x30mm  
**Plastic Color:** Gray, White or Customized  
**Lock:** Magnetic Locking  
**Lanyard Type:** Plastic cable  
**Lanyard Length:** 150mm  
**Lanyard Color:** White  
**Misc Info:** Without Ball  
**Packing Details:** 500pcs/ctn; 10kgs/ctn; 0.033cbm/ctn

**BT3009 Bottle Tag With Metal Cable 480mm**

**Frequency:** 8.2MHz / 58KHz  
**Unit Dimension:** 36x30mm  
**Plastic Color:** Gray, White or Customized  
**Lock:** Magnetic Locking  
**Lanyard Type:** Metal cable  
**Lanyard Length:** 480mm  
**Lanyard Color:** N/A  
**Misc Info:** With Ball

**BT3010 Bottle Tag With Metal Cable 160mm**

**Frequency:** 8.2MHz / 58KHz  
**Unit Dimension:** 36x30mm  
**Plastic Color:** Gray, White or Customized  
**Lock:** Magnetic Locking  
**Lanyard Type:** Metal cable  
**Lanyard Length:** 160mm  
**Lanyard Color:** N/A  
**Misc Info:** With Ball  
**Packing Details:** 500pcs/ctn; 12kgs/ctn; 0.028cbm/ctn

**BT3011 X50 Bottle Tag**

**Frequency:** 8.2MHz(\*) / 58KHz  
**Unit Dimension:** 50mmDia'  
**Plastic Color:** Gray, White or Customized  
**Lock:** Magnetic Locking  
**Lanyard Type:** Metal cable  
**Lanyard Length:** 160mm  
**Lanyard Color:** N/A  
**Misc Info:** With Ball  
**Packing Details:** 250pcs/ctn; 7.5kgs/ctn; 0.028cbm/ctn

**BT3013 Bottle Tag With Plastic Cable Without Ball**

**Frequency:** 8.2MHz(\*) / 58KHz  
**Unit Dimension:** 50mmDia'  
**Plastic Color:** Gray, White or Customized  
**Lock:** Magnetic Locking  
**Lanyard Type:** Plastic cable  
**Lanyard Length:** 150mm  
**Lanyard Color:** White  
**Misc Info:** Without Ball  
**Packing Details:** 250pcs/ctn; 6.5kgs/ctn; 0.028cbm/ctn



#### BT3014 Bottle Tag With Plastic Cable With Ball

**Frequency:** 8.2MHz(\*) / 58KHz  
**Unit Dimension:** 50mmDia'  
**Plastic Color:** Gray, White or Customized  
**Lock:** Magnetic Locking  
**Lanyard Type:** Plastic cable  
**Lanyard Length:** 150mm  
**Lanyard Color:** White  
**Misc Info:** With Ball  
**Packing Details:** 250pcs/ctn; 7kas/ctn; 0.028cbm/ctn



#### BT3016 Bottle Tag With Plastic Cable Without Ball

**Frequency:** 8.2MHz(\*) / 58KHz / EM/8.2MHz & 58KHz  
**Unit Dimension:** 50mmDia'  
**Plastic Color:** Gray, White or Customized  
**Lock:** Magnetic Locking  
**Lanyard Type:** Plastic cable  
**Lanyard Length:** 150mm  
**Lanyard Color:** White  
**Misc Info:** Without Ball  
**Packing Details:** 250pcs/ctn; 7kgs/ctn; 0.028cbm/ctn



#### BT3017 Bottle Tag With Plastic Cable With Ball

**Frequency:** 8.2MHz(\*) / 58KHz / EM/8.2MHz & 58KHz  
**Unit Dimension:** 50mmDia'  
**Plastic Color:** Gray, White or Customized  
**Lock:** Magnetic Locking  
**Lanyard Type:** Plastic cable  
**Lanyard Length:** 150mm  
**Lanyard Color:** White  
**Misc Info:** With Ball  
**Packing Details:** 250pcs/ctn; 6kgs/ctn; 0.028cbm/ctn



#### BT3018 Bottle Tag With Metal Cable 160mm

**Frequency:** 8.2MHz(\*) / 58KHz / EM/8.2MHz & 58KHz  
**Unit Dimension:** 50mmDia'  
**Plastic Color:** Gray, White or Customized  
**Lock:** Magnetic Locking  
**Lanyard Type:** Metal cable  
**Lanyard Length:** 160mm  
**Lanyard Color:** N/A  
**Misc Info:** With Ball  
**Packing Details:** 250pcs/ctn; 7kgs/ctn; 0.028cbm/ctn



#### BT3019 Bottle Tag With Metal Cable 480mm

**Frequency:** 8.2MHz(\*)  
**Unit Dimension:** 56mmDia'  
**Plastic Color:** Gray, White or Customized  
**Lock:** Magnetic Locking  
**Lanyard Type:** Metal cable  
**Lanyard Length:** 480mm  
**Lanyard Color:** N/A  
**Misc Info:** With Ball  
**Packing Details:** 250pcs/ctn; 8kgs/ctn; 0.036cbm/ctn



#### BT3020 Bottle Tag With Metal Cable 160mm

**Frequency:** 8.2MHz(\*)  
**Unit Dimension:** 56mmDia'  
**Plastic Color:** Gray, White or Customized  
**Lock:** Magnetic Locking  
**Lanyard Type:** Metal cable  
**Lanyard Length:** 160mm  
**Lanyard Color:** N/A  
**Misc Info:** With Ball  
**Packing Details:** 250pcs/ctn; 7kgs/ctn; 0.028cbm/ctn




**BT3021 Bottle Tag With Metal Cable 480mm**

**Frequency:** 8.2MHz(\*) / 58KHz

**Unit Dimension:** 56mmDia'

**Plastic Color:** Gray, White or Customized

**Lock:** Magnetic Locking

**Lanyard Type:** Metal cable

**Lanyard Length:** 480mm

**Lanyard Color:** N/A

**Misc Info:** With Ball

**Packing Details:** 250pcs/ctn; 6.5kgs/ctn; 0.028cbm/ctn


**BT3022 Bottle Tag With Metal Cable 160mm**

**Frequency:** 8.2MHz(\*) / 58KHz

**Unit Dimension:** 56mmDia'

**Plastic Color:** Gray, White or Customized

**Lock:** Magnetic Locking

**Lanyard Type:** Metal cable

**Lanyard Length:** 160mm

**Lanyard Color:** N/A

**Misc Info:** With Ball

**Packing Details:** 250pcs/ctn; 6.5kgs/ctn; 0.028cbm/ctn


**BT3042 Bottle Cap**

**Frequency:** 8.2MHz / 58KHz / 8.2MHz&58KHz

**Unit Dimension:** 68x65x48mm

**Plastic Color:** Black or Customized

**Lock:** Magnetic Locking

**Measurement In Protection:** 28-32mmDia' bottle neck

**Packing Details:** 100pcs/ctn; 7kgs/ctn; 0.033cbm/ctn


**BT3055 Champagne Bottle Cap**

**Frequency:** 8.2MHz / 58KHz / 8.2MHz&58KHz

**Unit Dimension:** 78x71x48mm

**Plastic Color:** Black or Customized

**Lock:** Magnetic Locking

**Measurement In Protection:** 30-36mmDia' bottle neck

**Packing Details:** 100pcs/ctn; 9.0kgs/ctn; 0.033cbm/ctn





### RL4601 Roll Labels

**Frequency:** 8.2MHz  
**Unit Dimension:** 40x40mm  
**Color:** Black, White or Barcode  
**Packing Details:** 20000pcs/ctn; 11kgs/ctn; 0.023cbm/ctn



### RL4602 Roll Labels

**Frequency:** 8.2MHz  
**Unit Dimension:** 51.5x48mm  
**Color:** Black, White or Barcode  
**Packing Details:** 20000pcs/ctn; 16kgs/ctn; 0.033cbm/ctn



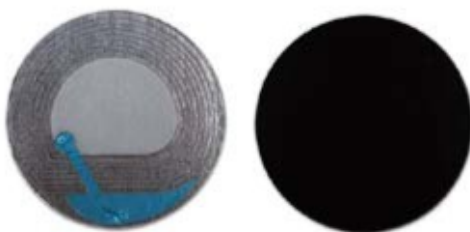
### RL4604 Roll Labels

**Frequency:** 8.2MHz  
**Unit Dimension:** 30x30mm  
**Color:** Black, White or Barcode  
**Packing Details:** 20000pcs/ctn; 7kgs/ctn; 0.022cbm/ctn



### RL4609 Roll Labels

**Frequency:** 8.2MHz  
**Unit Dimension:** 30x40mm  
**Color:** Black, White or Barcode  
**Packing Details:** 20000pcs/ctn; 9kgs/ctn; 0.022cbm/ctn



### RL4614 Roll Labels

**Frequency:** 8.2MHz  
**Unit Dimension:** 40Dia'mm  
**Color:** Black, White or Barcode  
**Packing Details:** 20000pcs/ctn; 10.5kgs/ctn; 0.023cbm/ctn



### RL4620 Freezer RF Labels

**Frequency:** 8.2MHz  
**Unit Dimension:** 40x40mm  
**Color:** Black, White or Barcode  
**Packing Details:** 20000pcs/ctn; 12kgs/ctn; 0.028cbm/ctn



#### RL4635 Sew In Labels

**Frequency:** 8.2MHz  
**Unit Dimension:** 46x60mm  
**Color:** Customizable  
**Packing Details:** 15000pcs/ctn; 19kgs/ctn; 0.028cbm/ctn



#### RL4641 Round RF Label

**Frequency:** 8.2MHz  
**Unit Dimension:** 33Dia\*mm  
**Color:** Black, White or Barcode  
**Packing Details:** 20000pcs/ctn; 7kgs/ctn; 0.020cbm/ctn



#### RL4643 Jewellery RF Label

**Frequency:** 8.2MHz  
**Unit Dimension:** 40mmDia'  
**Color:** Black, White or Barcode  
**Packing Details:** 5000pcs/ctn; 9.5kgs/ctn; 0.028cbm/ctn



#### RL4646 Thermal Sensitive

**Frequency:** 8.2MHz  
**Unit Dimension:** 40x40mm  
**Color:** Black, White or Barcode  
**Packing Details:** 20000pcs/ctn; 11kgs/ctn; 0.023cbm/ctn



#### RL4649 Cosmetics RF Label

**Frequency:** 8.2MHz  
**Unit Dimension:** 20x65mm  
**Color:** Black, White or Barcode  
**Packing Details:** 40000pcs/ctn; 15kgs/ctn; 0.024cbm/ctn



#### RL4655 Jewelry RF Label

**Frequency:** 8.2MHz  
**Unit Dimension:** 31x105mm  
**Color:** Black, White or Barcode  
**Packing Details:** 10000pcs/ctn; 10kgs/ctn; 0.024cbm/ctn



### RL4656 Eyewear RF Label

**Frequency:** 8.2MHz  
**Unit Dimension:** 40x150mm  
**Color:** Black, White or Barcode  
**Packing Details:** 10000pcs/ctn; 12kgs/ctn; 0.027cbm/ctn



### RL4657 Printed RF Label

**Frequency:** 8.2MHz  
**Unit Dimension:** 24x45mm  
**Color:** Customized Print  
**Packing Details:** 20000pcs/ctn; 10kgs/ctn; 0.027cbm/ctn



### RL4658 Ellipse RF Label

**Frequency:** 8.2MHz  
**Unit Dimension:** 23x62mm  
**Color:** Black, White or Barcode  
**Packing Details:** 20000pcs/ctn; 11kgs/ctn; 0.027cbm/ctn



### RL4659 Clear RF Label

**Frequency:** 8.2MHz  
**Unit Dimension:** 50mmDia  
**Color:** Clear  
**Packing Details:** 20000pcs/ctn; 17kgs/ctn; 0.033cbm/ctn



### RL4605 Punch Tag

**Frequency:** 8.2MHz(\*) / 58KHz  
**Unit Dimension:** 69x64mm / 48x54mm  
**Color:** Black, White or Barcode  
**Misc Info:** Customized Logo Available  
**Packing Details:** 1000pcs/ctn; 4kgs/ctn; 0.018cbm/ctn



### RL4606 Punch Tag

**Frequency:** 8.2MHz(\*) / 58KHz / 66KHz  
**Unit Dimension:** 64.8x27.5x6.6mm  
**Color:** Black, White or Barcode  
**Misc Info:** Customized Logo Available  
**Packing Details:** 2000pcs/ctn; 9.5kgs/ctn; 0.020cbm/ctn

**RL4607 Punch Tag**

**Frequency:** 8.2MHz

**Unit Dimension:** 42Dia'x63mm

**Color:** Clear, Barcoded or Customized

**Misc Info:** Customized Logo Available

**Packing Details:** 2000pcs/ctn; 4.5kgs/ctn; 0.018cbm/ctn

**RL4608 Punch Tag**

**Frequency:** 8.2MHz

**Unit Dimension:** 40Dia'x55mm

**Color:** Clear, Barcoded or Customized

**Misc Info:** Customized Logo Available

**Packing Details:** 2000pcs/ctn; 4.5kgs/ctn; 0.018cbm/ctn



### SF5008 Battery Safer Single

**Frequency:** 8.2MHz / 58KHz / 58KHz & 8.2MHz  
**Unit Dimension:** 160x114x42mm  
**Plastic Color:** Clear  
**Lock:** Magnetic Locking  
**Hook:** N/A  
**Measurement in Protection:** 109x80x17mm  
**Application Recommendation:** Single Layer Battery  
**Packing Details:** 180pcs/ctn; 18kgs/ctn; 0.080cbm/ctn



### SF5009 Battery Safer Double

**Frequency:** 8.2MHz / 58KHz / 58KHz & 8.2MHz  
**Unit Dimension:** 162x114x55mm  
**Plastic Color:** Clear  
**Lock:** Magnetic Locking  
**Hook:** With HOOK  
**Measurement in Protection:** 110x78x32mm  
**Application Recommendation:** Double Layer Battery  
**Packing Details:** 120pcs/ctn; 13kgs/ctn; 0.080cbm/ctn



### SF5010 Safer

**Frequency:** 8.2MHz / 58KHz / 58KHz & 8.2MHz  
**Unit Dimension:** 175x128x55mm  
**Plastic Color:** Clear  
**Lock:** Magnetic Locking  
**Hook:** With HOOK  
**Measurement in Protection:** 155x120x50mm  
**Application Recommendation:** Health & Beauty Protection  
**Packing Details:** 50pcs/ctn; 14kgs/ctn; 0.080cbm/ctn



### SF5011 Safer

**Frequency:** 8.2MHz / 58KHz  
**Unit Dimension:** 143x112x30mm  
**Plastic Color:** Clear  
**Lock:** Magnetic Locking  
**Hook:** With HOOK  
**Measurement in Protection:** 114.5x105x22mm  
**Application Recommendation:** Razor Blades  
**Packing Details:** 150pcs/ctn; 25kgs/ctn; 0.08cbm/ctn



### SF5012 Safer

**Frequency:** 8.2MHz / 58KHz / 58KHz & 8.2MHz  
**Unit Dimension:** 153x63x59mm  
**Plastic Color:** Clear  
**Lock:** Magnetic Locking  
**Hook:** With HOOK  
**Measurement in Protection:** 122x55x55mm  
**Application Recommendation:** Health & Beauty Protection  
**Packing Details:** 120pcs/ctn; 16kgs/ctn; 0.080cbm/ctn



### SF5014 Safer

**Frequency:** 8.2MHz / 58KHz / 58KHz & 8.2MHz  
**Unit Dimension:** 191x107x80mm  
**Plastic Color:** Clear  
**Lock:** Magnetic Locking  
**Hook:** With HOOK  
**Measurement in Protection:** 165x100x75mm  
**Application Recommendation:** Day&Night Face Creams and Anti-wrinkle Creams, Perfume  
**Packing Details:** 40pcs/ctn; 10kgs/ctn; 0.080cbm/ctn



### SF5017 Safer

**Frequency:** 8.2MHz / 58KHz / 58KHz & 8.2MHz  
**Unit Dimension:** 133x87x55mm  
**Plastic Color:** Clear  
**Lock:** Magnetic Locking  
**Hook:** N/A  
**Measurement in Protection:** 104x83x49mm  
**Application Recommendation:** Health & Beauty Protection  
**Packing Details:** 110pcs/ctn; 17kgs/ctn; 0.08cbm/ctn



### SF5019 DVD Safer

**Frequency:** 8.2MHz / 58KHz / 58KHz & 8.2MHz  
**Unit Dimension:** 223x153x23mm  
**Plastic Color:** Clear  
**Lock:** Magnetic Locking  
**Hook:** With HOOK  
**Measurement in Protection:** 194x144x17mm  
**Application Recommendation:** Single DVD  
**Packing Details:** 100pcs/ctn; 22.5kgs/ctn; 0.080cbm/ctn



### SF5020 DVD Safer

**Frequency:** 8.2MHz / 58KHz  
**Unit Dimension:** 223x153x23mm  
**Plastic Color:** Clear  
**Lock:** Magnetic Locking  
**Hook:** With HOOK  
**Measurement in Protection:** 194x144x17mm  
**Application Recommendation:** Single DVD  
**Packing Details:** 100pcs/ctn; 11kgs/ctn; 0.080cbm/ctn



### SF5021 Safer

**Frequency:** 8.2MHz / 58KHz / 58KHz & 8.2MHz  
**Unit Dimension:** 235x113x60mm  
**Plastic Color:** Clear  
**Lock:** Magnetic Locking  
**Hook:** With HOOK  
**Measurement in Protection:** 205x100x55mm  
**Application Recommendation:** Health & Beauty Protection  
**Packing Details:** 40pcs/ctn; 11kgs/ctn; 0.08cbm/ctn



### SF5022 DVD Safer

**Frequency:** 8.2MHz / 58KHz / 58KHz & 8.2MHz  
**Unit Dimension:** 248x155x39mm  
**Plastic Color:** Clear  
**Lock:** Magnetic Locking  
**Hook:** With HOOK  
**Measurement in Protection:** 221x137.5x33mm  
**Application Recommendation:** Double DVD  
**Packing Details:** 45pcs/ctn; 14.5kgs/ctn; 0.080cbm/ctn



### SF5023 Cigarette Safer

**Frequency:** 8.2MHz / 58KHz  
**Unit Dimension:** 336x115x74mm  
**Plastic Color:** Clear  
**Lock:** Magnetic Locking  
**Hook:** N/A  
**Measurement in Protection:** 292x109x55mm  
**Application Recommendation:** Cigarette Safer  
**Packing Details:** 28pcs/ctn; 7kgs/ctn; 0.080cbm/ctn





### SF5037 Xylitol Gum Safer

**Frequency:** 8.2MHz / 58KHz  
**Unit Dimension:** 88x78x57mm  
**Plastic Color:** Transparent  
**Lock:** Magnetic Locking  
**Application Recommendation:** Xylitol Gum  
**Packing Details:** 100pcs/ctn; 7kgs/ctn; 0.039cbm/ctn



### SF5045 Mega Safer

**Frequency:** 8.2MHz / 58KHz / 8.2MHz&58KHz  
**Unit Dimension:** 167x126x265mm  
**Plastic Color:** Transparent  
**Lock:** Magnetic Locking  
**Hook:** With HOOK  
**Measurement in Protection:** 150x100x250mm  
**Application Recommendation:** Vacuum Cup, etc  
**Packing Details:** 12pcs/ctn; 6.5kgs/ctn; 0.080cbm/ctn



### SF5046 Mega Safer

**Frequency:** 8.2MHz / 58KHz / 8.2MHz&58KHz  
**Unit Dimension:** 137x146x314mm  
**Plastic Color:** Transparent  
**Lock:** Magnetic Locking  
**Hook:** With HOOK  
**Measurement in Protection:** 120x120x300mm  
**Application Recommendation:** Vacuum Cup, etc  
**Packing Details:** 9pcs/ctn; 6.0kgs/ctn; 0.080cbm/ctn



### SF5047 Assembled Safer

**Frequency:** 8.2MHz / 58KHz / 8.2MHz&58KHz  
**Unit Dimension:** 74x62x259mm  
**Plastic Color:** Transparent  
**Lock:** Magnetic Locking  
**Hook:** With HOOK  
**Measurement in Protection:** 66x56x241mm  
**Application Recommendation:** Toothpaste, etc  
**Packing Details:** 50pcs/ctn; 11.5kgs/ctn; 0.080cbm/ctn



### SF5050 Assembled Safer

**Frequency:** 8.2MHz / 58KHz / 8.2MHz&58KHz  
**Unit Dimension:** 74x62x195mm  
**Plastic Color:** Transparent  
**Lock:** Magnetic Locking  
**Hook:** With HOOK  
**Measurement in Protection:** 66x56x174mm  
**Application Recommendation:** Toothpaste, etc  
**Packing Details:** 80pcs/ctn; 13.0kgs/ctn; 0.080cbm/ctn



#### SF5036 One-off Milk Powder Safer

**Frequency:** 58KHz  
**Unit Dimension:** 105Dia'x16mm  
**Plastic Color:** Gray or Customized  
**Lock:** Mechanical Locking  
**Hook:** N/A  
**Measurement in Protection:** 100-102mmDia'  
**Application Recommendation:** Milk Powder Can  
**Packing Details:** 420pcs/ctn; 14kgs/ctn; 0.080cbm/ctn



#### SF5035 One-off Milk Powder Safer

**Frequency:** 58KHz  
**Unit Dimension:** 132Dia'x16mm  
**Plastic Color:** Gray or Customized  
**Lock:** Mechanical Locking  
**Hook:** N/A  
**Measurement in Protection:** 127-129mmDia'  
**Application Recommendation:** Milk Powder Can  
**Packing Details:** 300pcs/ctn; 13kgs/ctn; 0.080cbm/ctn



#### SF5039 One-off Milk Powder Safer

**Frequency:** 58KHz  
**Unit Dimension:** 105Dia'x16mm  
**Plastic Color:** White or Customized  
**Lock:** Mechanical Locking  
**Hook:** N/A  
**Measurement in Protection:** 100-102mmDia'  
**Application Recommendation:** Milk Powder Can  
**Packing Details:** 650pcs/ctn; 10kgs/ctn; 0.080cbm/ctn



#### SF5038 One-off Milk Powder Safer

**Frequency:** 58KHz  
**Unit Dimension:** 132Dia'x16mm  
**Plastic Color:** White or Customized  
**Lock:** Mechanical Locking  
**Hook:** N/A  
**Measurement in Protection:** 127-129mmDia'  
**Application Recommendation:** Milk Powder Can  
**Packing Details:** 450pcs/ctn; 10kgs/ctn; 0.080cbm/ctn



#### SF5040 Milk Powder Safer

**Frequency:** 8.2MHz / 58KHz / 8.2MHz & 58KHz  
**Unit Dimension:** 158Dia'x30mm  
**Plastic Color:** Black or Customized  
**Lock:** Magnetic Locking  
**Hook:** N/A  
**Measurement in Protection:** 127-129mmDia'  
**Packing Details:** 140pcs/ctn; 15kgs/ctn; 0.080cbm/ctn



#### SF5032 EAS Bag

**Frequency:** 8.2MHz / 58KHz / 58KHz & 8.2MHz  
**Unit Dimension:** 600x600x100mm or Customized  
**Plastic Color:** Blue  
**Packing Details:** 40pcs/ctn; 19kgs/ctn; 0.080cbm/ctn



**DT4002 Detacher**

**Frequency:** 8.2MHz / 58KHz  
**Unit Dimension:** 15x95mm  
**Plastic Color:** N/A  
**Magnetic Force:** N/A  
**Packing Details:** Customized



**DT4004 Detacher**

**Unit Dimension:** 21.7Dia'x58mm  
**Plastic Color:** N/A  
**Magnetic Force:**  $\geq 5900Gs$   
**Packing Details:** 200pcs/ctn; 14kgs/ctn; 0.020cbm/ctn



**DT4061 Detacher**

**Unit Dimension:** 22.8Dia'x57.4mm  
**Plastic Color:** N/A  
**Magnetic Force:**  $\geq 5900Gs$   
**Packing Details:** 200pcs/ctn; 15kgs/ctn; 0.022cbm/ctn



**DT4005 Small**

**Unit Dimension:** 68Dia'x25mm  
**Plastic Color:** N/A  
**Magnetic Force:**  $\geq 4500/5500Gs$   
**Packing Details:** 100pcs/ctn; 20kgs/ctn; 0.028cbm/ctn



**DT4008 Magnetic Detacher**

**Unit Dimension:** 75Dia'x35mm  
**Plastic Color:** N/A  
**Magnetic Force:**  $\geq 10000Gs$   
**Packing Details:** 50pcs/ctn; 24kgs/ctn; 0.024cbm/ctn



**DT4009 Dome**

**Unit Dimension:** 75Dia'x45mm  
**Plastic Color:** N/A  
**Magnetic Force:**  $\geq 10000Gs$   
**Packing Details:** 50pcs/ctn; 25kgs/ctn; 0.024cbm/ctn



### DT4010 Super Counter

**Unit Dimension:** 75Dia'x45mm  
**Plastic Color:** N/A  
**Magnetic Force:**  $\cong 10000Gs$   
**Packing Details:** 50pcs/ctn; 23kgs/ctn; 0.024cbm/ctn



### DT4011 Super Small

**Unit Dimension:** 70Dia'x52mm  
**Plastic Color:** N/A  
**Magnetic Force:**  $\cong 10000Gs$   
**Packing Details:** 50pcs/ctn; 20kgs/ctn; 0.024cbm/ctn



### DT4012 Dome Plus

**Unit Dimension:** 75Dia'x45mm  
**Plastic Color:** N/A  
**Magnetic Force:**  $\cong 10000Gs$   
**Packing Details:** 50pcs/ctn; 24kgs/ctn; 0.024cbm/ctn



### DT4013 Dome Detacher

**Unit Dimension:** 70Dia'x45mm  
**Plastic Color:** N/A  
**Magnetic Force:**  $\cong 9500Gs$   
**Packing Details:** 50pcs/ctn; 23kgs/ctn; 0.024cbm/ctn



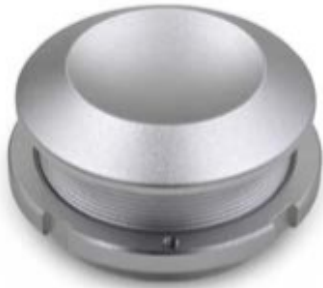
### DT4015 Detacher Combi

**Unit Dimension:** 73Dia'x34mm  
**Plastic Color:** N/A  
**Magnetic Force:**  $\cong 10000Gs$   
**Packing Details:** 50pcs/ctn; 22kgs/ctn; 0.024cbm/ctn



### DT4017 Detacher

**Unit Dimension:** 73.7Dia'x33.5mm  
**Plastic Color:** N/A  
**Magnetic Force:**  $\cong 10000Gs$   
**Packing Details:** 50pcs/ctn; 19kgs/ctn; 0.024cbm/ctn



**DT4018 Detacher**

**Unit Dimension:** 69Dia'x40.5mm  
**Plastic Color:** N/A  
**Magnetic Force:**  $\geq 10000Gs$   
**Packing Details:** 50pcs/ctn; 25kgs/ctn; 0.028cbm/ctn



**DT4020 Plastic Coated Detacher**

**Unit Dimension:** 70Dia'x50mm  
**Plastic Color:** Black  
**Lanyard Length:** 1000mm  
**Magnetic Force:**  $\geq 10000Gs$   
**Packing Details:** 13pcs/ctn; 10kgs/ctn; 0.036cbm/ctn



**DT4021 Plastic Coated Detacher with Lid**

**Unit Dimension:** 82Dia'x75mm  
**Plastic Color:** Black  
**Magnetic Force:**  $\geq 10000Gs$   
**Packing Details:** 50pcs/ctn; 21kgs/ctn; 0.036cbm/ctn



**DT4022 Ultra Detacher**

**Unit Dimension:** 70Dia'x55mm  
**Plastic Color:** Black  
**Magnetic Force:**  $\geq 10000Gs$   
**Packing Details:** 50pcs/ctn; 20kgs/ctn; 0.036cbm/ctn



**DT4062 Detacher**

**Unit Dimension:** 82Dia'x67.3mm  
**Plastic Color:** N/A  
**Magnetic Force:**  $\geq 14500Gs$   
**Packing Details:** 15pcs/ctn; 20kgs/ctn; 0.024cbm/ctn



**DT4065 Plastic Coated Detacher with Lid**

**Unit Dimension:** 80Dia'x88mm  
**Plastic Color:** Red  
**Magnetic Force:**  $\geq 10000 / 14000Gs$   
**Packing Details:** Customized



#### DT4066 Detacher with Lid

**Unit Dimension:** 75Dia'x50mm  
**Plastic Color:** N/A  
**Magnetic Force:**  $\geq 10000$   
**Packing Details:** 50pcs/ctn; 23kgs/ctn; 0.028cbm/ctn



#### DT4071 Ultra with Lid

**Unit Dimension:** 75Dia'x90mm  
**Plastic Color:** N/A  
**Magnetic Force:**  $\geq 15000$   
**Packing Details:** 24pcs/ctn; 38kgs/ctn; 0.015cbm/ctn



#### DT4077

**Unit Dimension:** 81Dia'x70mm  
**Plastic Color:** N/A  
**Magnetic Force:**  $\geq 15000$   
**Packing Details:** 15pcs/ctn; 22kgs/ctn; 0.028cbm/ctn



#### DL4401 Detacher Locker With Stick

**Unit Dimension:** 52Dia'x33.3mm  
**Plastic Color:** N/A  
**Packing Details:** Customized



#### DL4402 Detacher Locker A

**Unit Dimension:** 21Dia'x34mm  
**Plastic Color:** N/A  
**Packing Details:** Customized



#### DL4403 Detacher Locker B

**Unit Dimension:** 45Dia'x38mm  
**Plastic Color:** N/A  
**Packing Details:** Customized



### PN6001 Flat Steel Pin

**Unit Dimension:** 12mmDia'  
**Plastic Color:** N/A  
**Pin Length:** 16 / 19mm or Customized  
**Pin Shaft:** Smooth Pin / Serrated Pin  
**Packing Details:** 10000pcs/ctn; 15kgs/ctn; 0.015cbm/ctn



### PN6002 Swivel Steel Pin

**Unit Dimension:** 12mmDia'  
**Plastic Color:** N/A  
**Pin Length:** 16 / 19mm or Customized  
**Pin Shaft:** Smooth Pin / Serrated Pin  
**Packing Details:** 10000pcs/ctn; 21kgs/ctn; 0.015cbm/ctn



### PN6003 General Steel Pin

**Unit Dimension:** 20mmDia'  
**Plastic Color:** N/A  
**Pin Length:** 16 / 19mm or Customized  
**Pin Shaft:** Smooth Pin / Serrated Pin  
**Packing Details:** 5000pcs/ctn; 18kgs/ctn; 0.028cbm/ctn



### PN6004 Dome Steel Pin

**Unit Dimension:** 15mmDia'  
**Plastic Color:** N/A  
**Pin Length:** 16 / 19mm or Customized  
**Pin Shaft:** Smooth Pin / Serrated Pin  
**Packing Details:** 10000pcs/ctn; 21kgs/ctn; 0.028cbm/ctn



### PN6005 Cone Steel Pin

**Unit Dimension:** 14mmDia'  
**Plastic Color:** N/A  
**Pin Length:** 16 / 19mm or Customized  
**Pin Shaft:** Smooth Pin / Serrated Pin  
**Packing Details:** 10000pcs/ctn; 21kgs/ctn; 0.028cbm/ctn



### PN6006 Pin For Yurta Tag

**Unit Dimension:** 30mmDia'  
**Plastic Color:** Gray, White or Customized  
**Pin Length:** 16 / 19mm or Customized  
**Pin Shaft:** Smooth Pin / Serrated Pin  
**Packing Details:** 5000pcs/ctn; 8kgs/ctn; 0.039cbm/ctn



### PN6007 Light Plastic Pin

**Unit Dimension:** 19.5mmDia'  
**Plastic Color:** Gray, White or Customized  
**Pin Length:** 15mm or Customized  
**Pin Shaft:** SuperTag Pin  
**Packing Details:** 10000pcs/ctn; 8kgs/ctn; 0.028cbm/ctn



### PN6009 Cone Plastic Pin

**Unit Dimension:** 16mmDia'  
**Plastic Color:** Gray, White or Customized  
**Pin Length:** 16 / 19mm or Customized  
**Pin Shaft:** Smooth Pin / Serrated Pin  
**Packing Details:** 10000pcs/ctn; 8kgs/ctn; 0.028cbm/ctn



### PN6010 Dome Plastic Pin

**Unit Dimension:** 20mmDia'  
**Plastic Color:** Gray, White or Customized  
**Pin Length:** 15mm or Customized  
**Pin Shaft:** SuperTag Pin  
**Packing Details:** 10000pcs/ctn; 10kgs/ctn; 0.033cbm/ctn



### PN6011 Dome Plastic Pin

**Unit Dimension:** 20mmDia'  
**Plastic Color:** Gray, White or Customized  
**Pin Length:** 15mm or Customized  
**Pin Shaft:** SuperTag Pin  
**Packing Details:** 10000pcs/ctn; 10kgs/ctn; 0.033cbm/ctn



### PN6012 Dome Plastic Pin

**Unit Dimension:** 20mmDia'  
**Plastic Color:** Gray, White or Customized  
**Pin Length:** 16 / 19mm or Customized  
**Pin Shaft:** Smooth Pin / Serrated Pin  
**Packing Details:** 10000pcs/ctn; 8kgs/ctn; 0.028cbm/ctn



### PN6013 Plastic Pin

**Unit Dimension:** 20mmDia'  
**Plastic Color:** Gray, White or Customized  
**Pin Length:** 16 / 19mm or Customized  
**Pin Shaft:** Smooth Pin / Serrated Pin  
**Packing Details:** 10000pcs/ctn; 13kgs/ctn; 0.033cbm/ctn





#### PN6014 Plastic Pin

**Unit Dimension:** 18mmDia'  
**Plastic Color:** Gray, White or Customized  
**Pin Length:** 16 / 19mm or Customized  
**Pin Shaft:** Smooth Pin / Serrated Pin  
**Packing Details:** 10000pcs/ctn; 12kgs/ctn; 0.033cbm/ctn



#### PN6015 Plastic Pin

**Unit Dimension:** 32mmDia'  
**Plastic Color:** Gray, White or Customized  
**Pin Length:** 16 / 19mm or Customized  
**Pin Shaft:** Smooth Pin / Serrated Pin  
**Packing Details:** 25000pcs/ctn; 6kgs/ctn; 0.028cbm/ctn



#### PN6016 Plastic Pin

**Unit Dimension:** 42mmDia'  
**Plastic Color:** Gray, White or Customized  
**Pin Length:** 16 / 19mm or Customized  
**Pin Shaft:** Smooth Pin / Serrated Pin  
**Packing Details:** 2000pcs/ctn; 8kgs/ctn; 0.043cbm/ctn



#### PN6017 Burger Pin

**Unit Dimension:** 10mmDia'  
**Plastic Color:** Gray, White or Customized  
**Pin Length:** 17mm or Customized  
**Pin Shaft:** Smooth Pin / Serrated Pin  
**Packing Details:** 10000pcs/ctn; 20kgs/ctn; 0.024cbm/ctn



#### PN6018 Long Pin

**Unit Dimension:** 11.8mmDia'  
**Plastic Color:** Gray, White or Customized  
**Pin Length:** 19mm or Customized(<38mm)  
**Pin Shaft:** Smooth Pin / Serrated Pin  
**Packing Details:** 10000pcs/ctn; 17kgs/ctn; 0.039cbm/ctn



#### PN6021 Elec Pin

**Frequency:** 8.2MHz / 58KHz  
**Unit Dimension:** 38.5x19x11.5mm  
**Plastic Color:** Black or Customized  
**Pin Length:** 16 / 19mm or Customized  
**Pin Shaft:** Smooth Pin / Serrated Pin  
**Packing Details:** 1000pcs/ctn; 8kgs/ctn; 0.024cbm/ctn



### PN6023 Pin

**Unit Dimension:** 13mmDia'  
**Plastic Color:** Black or Customized  
**Pin Length:** 16 / 19mm or Customized  
**Pin Shaft:** Smooth Pin / Serrated Pin  
**Packing Details:** 25000pcs/ctn; 14kgs/ctn; 0.028cbm/ctn



### PN6024 Pin

**Unit Dimension:** 26mmDia'  
**Plastic Color:** Black or Customized  
**Pin Length:** 13mm or Customized  
**Pin Shaft:** Smooth Pin / Serrated Pin  
**Packing Details:** 4000pcs/ctn; 11.5kgs/ctn; 0.028cbm/ctn



### PN6025 Clear Pin

**Unit Dimension:** 15mmDia'  
**Plastic Color:** Clear or Customized  
**Pin Length:** 16 / 19mm or Customized  
**Pin Shaft:** Smooth Pin / Serrated Pin  
**Packing Details:** 10000pcs/ctn; 8.5kgs/ctn; 0.028cbm/ctn



### PN6026 Clear Plastic Pin

**Unit Dimension:** 30mmDia'  
**Plastic Color:** Clear or Customized  
**Pin Length:** 16 / 19mm or Customized  
**Pin Shaft:** Smooth Pin / Serrated Pin  
**Packing Details:** 4000pcs/ctn; 9kgs/ctn; 0.039cbm/ctn



### PN6029 Logo Pin

**Unit Dimension:** 33mmDia'  
**Plastic Color:** Gray, White or Customized  
**Pin Length:** 16 / 19mm or Customized  
**Pin Shaft:** Smooth Pin / Serrated Pin  
**Packing Details:** 2000pcs/ctn; 6kgs/ctn; 0.024cbm/ctn



### PN6037 Steel Pin

**Unit Dimension:** 15x5mm  
**Plastic Color:** N/A  
**Pin Length:** 16 / 19mm or Customized  
**Pin Shaft:** Smooth Pin / Serrated Pin  
**Packing Details:** 10000pcs/ctn; 15kgs/ctn; 0.018cbm/ctn



### LD3601 Lanyard

**Unit Dimension:** 1.2mm Dia  
**Plastic Color:** N/A  
**Lanyard Type:** Metal Cable  
**Lanyard Length:** 175mm or Customized  
**Lanyard Color:** N/A  
**Packing Details:** 10000pcs/ctn; 14kgs/ctn; 0.011cbm/ctn



### LD3602 Lanyard

**Unit Dimension:** 1.8mm Dia  
**Plastic Color:** White or Customized  
**Lanyard Type:** Metal Cable  
**Lanyard Length:** 175mm or Customized  
**Lanyard Color:** Black, White or Customized  
**Packing Details:** 5000pcs/ctn; 13kgs/ctn; 0.022cbm/ctn



### LD3603 Lanyard

**Unit Dimension:** 1.8mm Dia  
**Plastic Color:** White or Customized  
**Lanyard Type:** Metal Cable  
**Lanyard Length:** 175mm or Customized  
**Lanyard Color:** Black, White or Customized  
**Packing Details:** 5000pcs/ctn; 10kgs/ctn; 0.018cbm/ctn



### LD3604 Lanyard-TB

**Unit Dimension:** 4mm Dia  
**Plastic Color:** Clear or Customized  
**Lanyard Type:** Metal Cable  
**Lanyard Length:** 150mm or Customized  
**Lanyard Color:** Clear or Customized  
**Packing Details:** 2000pcs/ctn; 17kgs/ctn; 0.022cbm/ctn



### LD3606 Lanyard

**Unit Dimension:** 1.8mm Dia  
**Plastic Color:** White or Customized  
**Lanyard Type:** Metal Cable  
**Lanyard Length:** 209mm or Customized  
**Lanyard Color:** Black, White or Customized  
**Packing Details:** 5000pcs/ctn; 23kgs/ctn; 0.028cbm/ctn



### OS0092 AM Deactivator

**Characteristics:**

- \* Compact design, requires little space at the POS;
- \* Audible and visual confirmation after deactivation;
- \* Deactivating AM labels up to 15cms above the pad;
- \* Via connection with PC, can adjust the synchronization with antennas nearby;
- \* "Detection only" mode is available.

**Dimensions and weights:**

- \* LxWxD: 235x210x45mm
- \* Weight: 1.2kg

**Electrical Specifications:**

- \* Input power: 25W
- \* Input voltage: 110/240VAC

**Color:**

- \* Customized

**Debugging cable optional**



### OS0143 AM Deactivator

**Characteristics:**

- \* Main deactivator can drive 1 slave deactivator by 3 meter electric wire;
- \* Detection mode and deactivation mode switchable based on client demand;
- \* Audible and visual confirmation that the label has been detected or deactivated;
- \* Deactivating AM labels up to 10cm for main pad, bit lower for slave pad.

**Dimensions and weights:**

- \* LxWxD: 280\*240\*70mm
- \* Weight: 0.9kg

**Electrical Specifications:**

- \* Input power: 25W
- \* Input voltage: 110/240VAC

**Color:**

- \* Customized

**Debugging cable optional**



### OS0025 AM Deactivator

**Characteristics:**

- \* Compact design;
- \* Easy to operate.

**Dimensions and weights:**

- \* LxWxD: 157x106x5mm
- \* Weight: 0.24kg

**Electrical Specifications:**

- \* Input power: N/A
- \* Input voltage: N/A

**Color:**

- \* Black



### OS0021 RF 8.2MHz Deactivator

**Characteristics:**

- \* Superb label deactivation performance
- \* The OS0021 deactivated labels up to 15cm in one-to-one mode, 10cm in One-to-two mode. Label detection rate at 2 pcs/econd
- \* Reliable audible and visual indication of deactivation

**Dimensions and weights:**

- \* LxWxD: 290x150x70mm
- \* Weight: 4kg

**Electrical Specifications:**

- \* Input power: 25W
- \* Input voltage: 110/240VAC

**Color:**

- \* Customized



### OS0022 RF 8.2MHz Digital Deactivator

**Characteristics:**

- \* Superb label deactivation performance
- \* The OS0022 deactivated labels up to 20cm above the pad in the normal mode. Label detection rate at 2 pcs/econd
- \* Reliable audible and visual indication of deactivation
- \* Plug and Play Mounting options allow table top or flush mounting

**Dimensions and weights:**

- \* LxWxD: 243x233x26mm
- \* Weight: 995g

**Electrical Specifications:**

- \* Input power: 25W
- \* Input voltage: 110/240VAC

**Color:**

- \* Customized



### OS0041 RF 8.2MHz Digital Deactivator (Split Version)

**Characteristics:**

- \* 20cm deactivation height above the pad in the normal mode;
- \* Label detection rate at 2pcs/sec;
- \* Reliable audible and visual indication;
- \* Both available in table top or flush mounting;

**Dimensions and weights:**

- \* LxWxD: 243x233x26mm
- \* Weight: 1.2kg

**Electrical Specifications:**

- \* Input power: 25W
- \* Input voltage: 110/240VAC

**Color:**

- \* Customized



### OS0023 RF 8.2MHz Hand Verifier

**Frequency**  
8.2MHz

**Primary Input**  
N/A

**Measurement**  
160x73x35mm

**Weight**  
143g

**Color Availability**  
Grey or customized

**Packing Details**  
Customized

**Key Features**

- .Battery Life, Alarm: 24hours
- .Detection Distance: Max. 20cm
- .Unit QTY Per Carton: 56pcs
- .Buzzer, dB at 1 meter: 70dB
- .Buzzer, Alarm: Continuous beep up to 70 dB
- .LED, Alarm: Continuous flash
- .Power ON/OFF method: Keep pressing the START button

**Voltage**  
9V



### OS0024 RF 8.2MHz Hand Verifier & Deactivator

**Frequency**  
8.2MHz

**Primary Input**  
110-240Vac

**Measurement**  
280x70x33mm

**Weight**  
390g

**Color Availability**  
Black or customized

**Packing Details**  
Customized

**Key Features**

- .Battery INFO: 1.Rechargeable LI-ION Battery; 2.The battery can be used for two years; 3.The charge time is about 2-3 hours; 4.Can work 500 times; 5.AC/DC adapter included
- .Low Battery Indication: Not available
- .Buzzer, dB at 1 meter: The buzzer will keep continuously up to 100dB
- .LED, Alarm: 1.Red and blue LED; 2.Reliable audible and visual indication of detection and deactivation
- .Power ON method: Keep pressing the START button
- .Detection Distance: For small square tag or 40x40mm paper label, the distance is 17cm
- .Deactivation Distance: For RF 40x40mm paper label, the distance is 15cm
- .CE Certification: Available

**Voltage**  
12V



## OS0027 Wireless People Counter

**Measurement**  
113x67x20mm

**Weight**  
300g

**Color Availability**  
Grey or customized

**Packing Details**  
25pcs/ctn; 7kgs; 0.033cbm/ctn

### Key Features

- .Easy data retrieval by date or by hour
- .Counter Management via Windows, no extra software required
- .1.15 Inch blue screen LCD display makes it easy on the eyes
- .Internal memory capable of storing for up to 500 hours(Per hour per entry)
- .Replaceable battery operated for a truly wireless installation
- .Counts across span up to 4 meters
- .Integrated mounting set or optional ABS plastic seat
- .Setting & preferences are managed locally by key board on the counter
- .LCD screen background- light turn- ON/OFF when only people access
- .Power on/off timer for long battery life
- .Lower battery indicator on LCD screen
- .Two languages for operation(English / Mandarin)
- .LED indication for weak signal
- .Traffic data on desktop display for immediate inquiry
- .Capable to be built into EAS Antenna to work together with system



## OS0039 New Wireless People Counter

**Primary Input**  
110-220V AC

**Measurement**  
87x59x27mm

**Weight**  
650g

**Color Availability**  
Black or customized

**Packing Details**  
Customized

### Key Features

- .Easy data retrieval by date or by hour
- .Counter Management via Windows, no extra software required
- .1.15 Inch blue screen LCD display ameks it easy on the eyes
- .Internal memory capable of storing for up to 500 hours(Per hour per entry)
- .Replaceable battery operated for a truly wireless installation
- .Counts across span up to 4 meters
- .Integrated mounting set or optional ABS plastic seat
- .Setting & preferences are managed locally by key board on the counter
- .LCD screen background- light turn- ON/OFF when only people access
- .Power on/off timer for long battery life
- .Lower battery indicator on LCD screen
- .Two languates for operation(English / Mandarin)
- .LED indication for weak signal
- .Traffic data on desktop display for immediate inquiry
- .Capable to be built into EAS Antenna to work together with system
- .Tiny shape with excellent performance
- .Charge available both by electricity and battery



A set of practices originally developed by OnTime's management team to systematically improve processes by eliminating defects, centered on quality, based on the participation of all its members and aiming at long-term success through customer satisfaction, and benefits to all members of OnTime and to the industry.



### STEP 1

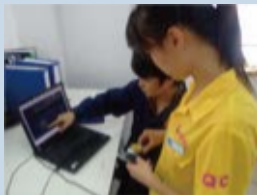


Bases on the ISO 9000, OnTime's Quality Management Team is implementing a uniform system for assessing the quality control and management of equipment and material suppliers. It is

focused on the quality systems and management practices of the suppliers in support of delivering qualified material.



### STEP 2



Incoming Quality Control by QC Management checks are carried out on all products at OnTime's 2 mother warehouse. All the IQC set-ups are equipped with state-of-the-art Testing

Instruments & Software Tools. A team of qualified engineers and technicians are responsible for the required Test & Inspection activities.



### STEP 3



On-Site Inspection by Manufacturing Management of a part during production to detect errors. Errors that are detected early may allow the part to be reworked or prevented from continuing

through the manufacturing process.



### STEP 4



### STEP 4

In Process Inspection by Engineering & Technician Management will verify and document that all applicable specifications and requirements pertaining to OnTime's product are stable and

continue to meet specifications and requirements through out the production run. Approval to continue manufacturing parts with the process being monitored will be given when in process inspection indicates all contract requirements continue to be satisfied.



### STEP 5



Additionally, the In Process Inspection by QC Management will be to ensure that basic requirements continue to be met and documented as required by the customer contract specific to OnTime's

responsibility to provide control over the process, provide objective evidence of product conformance to specification and continued effectiveness of the quality management system.



### STEP 6



The Quality Inspection by Warehouse Management is to determine if the products meets the specifications and drawing requirements of the purchase order. Documents are prepared to notify

Purchasing and Inventory Control as to the status of the material.



### STEP 7



Before delivering the shipment, the purchase order related products are required to conduct a Pre-Delivery Inspection. Sample checks of the shipment will always take place to discover

in-house damage, missing, incomplete or not operating properly.





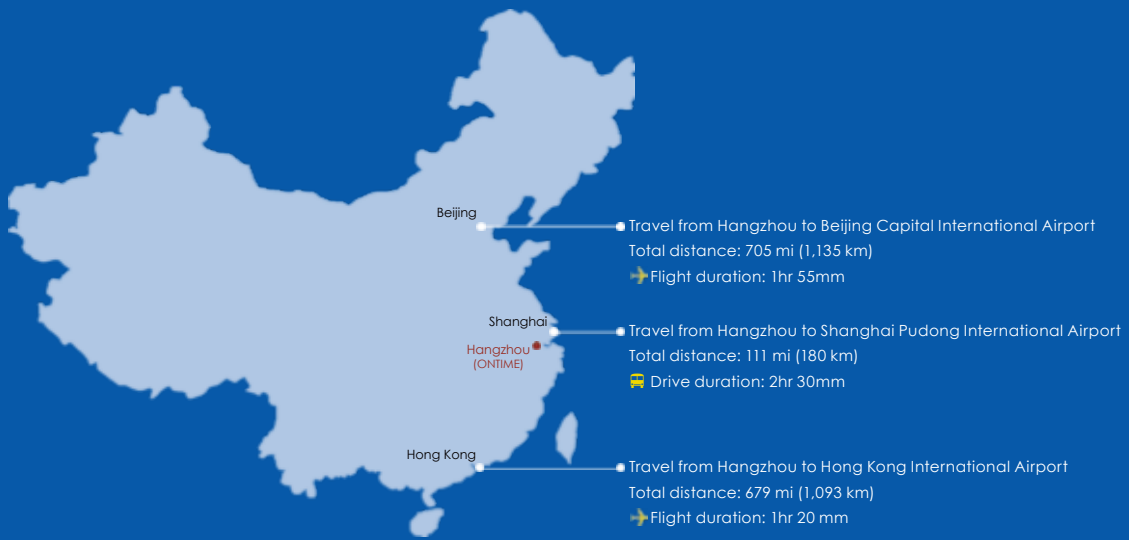
Thank you for choosing Ontime to be your loyal supplier, we hope you are satisfied with our products and feel convenient for our service. We are really looking forward to the business opportunity with you again.

Here, by giving us your comments and suggestions on our Ontime Customer Service, you will help us for the further improvement from Ontime Team. We hope you could share a few minutes to help us every year of the running business.

Please kindly let us know any of your opinions by mail, e-mail or fax.

Once again. Thank you for your time and we will make sure you have excellent experience at Ontime team.





**Time** We are the team  
We grow together